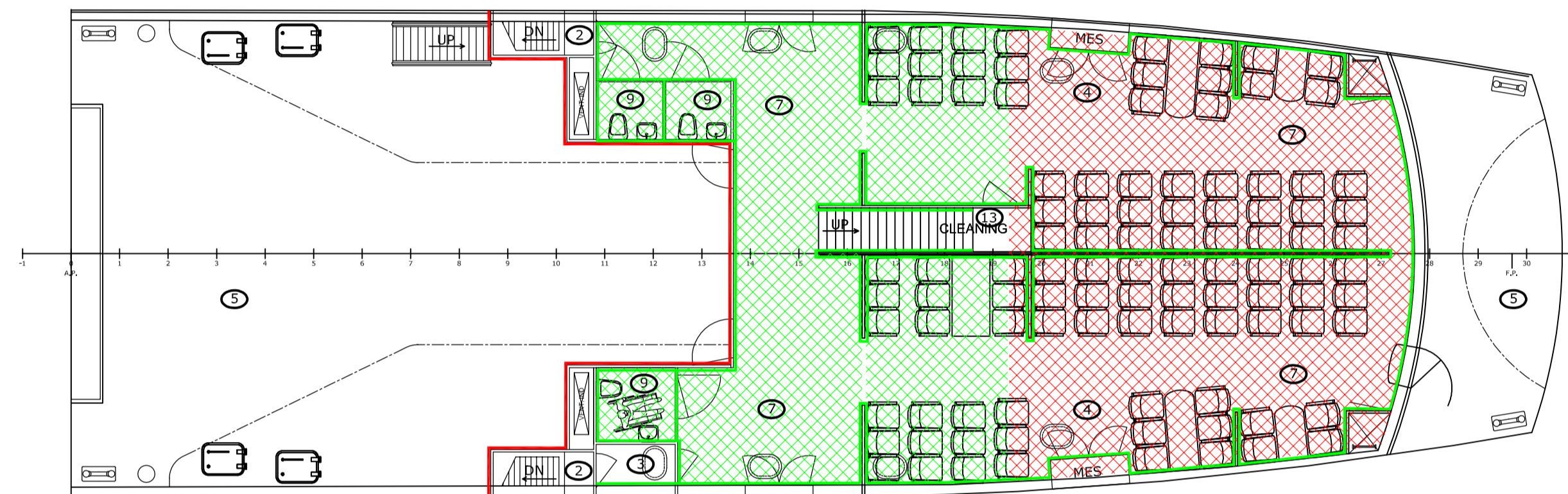
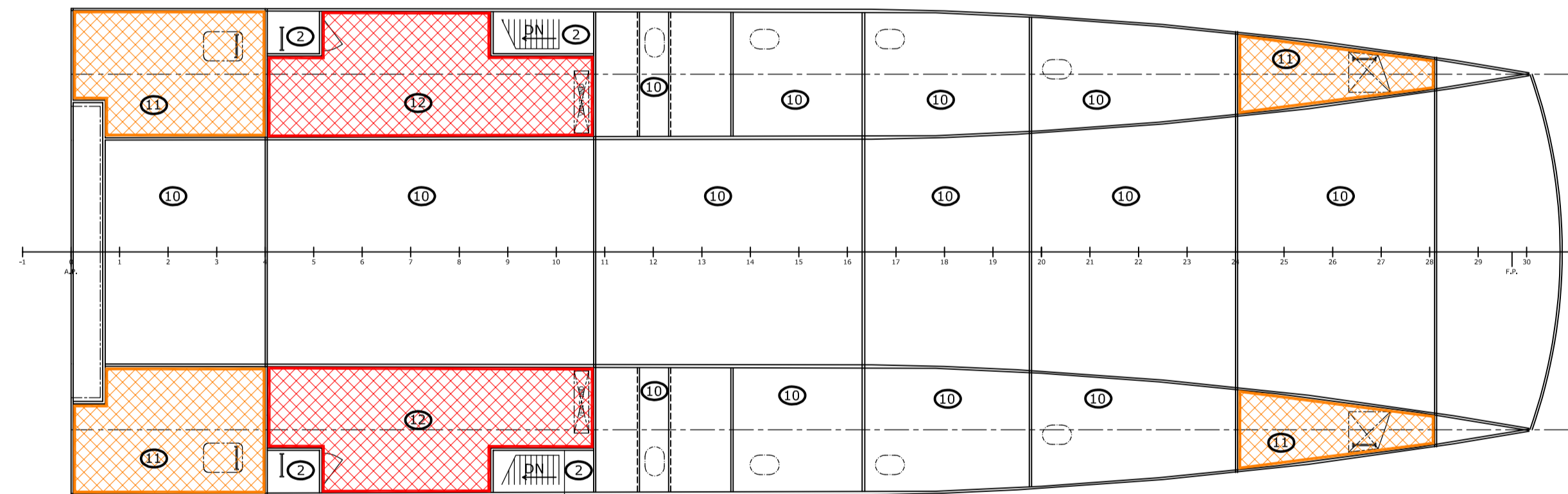


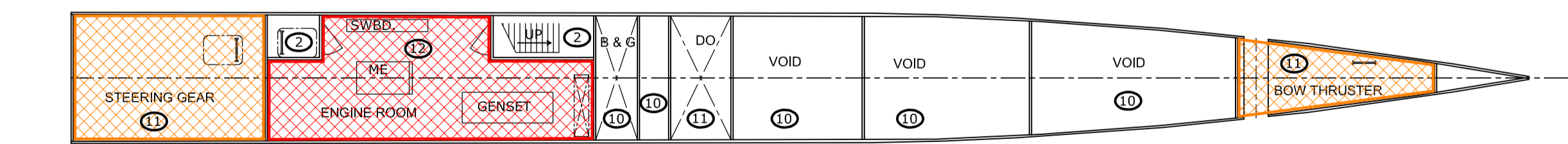
ACCOMMODATION DECK 5700 mm ABOVE BL



MAIN DECK 3200 mm ABOVE BL



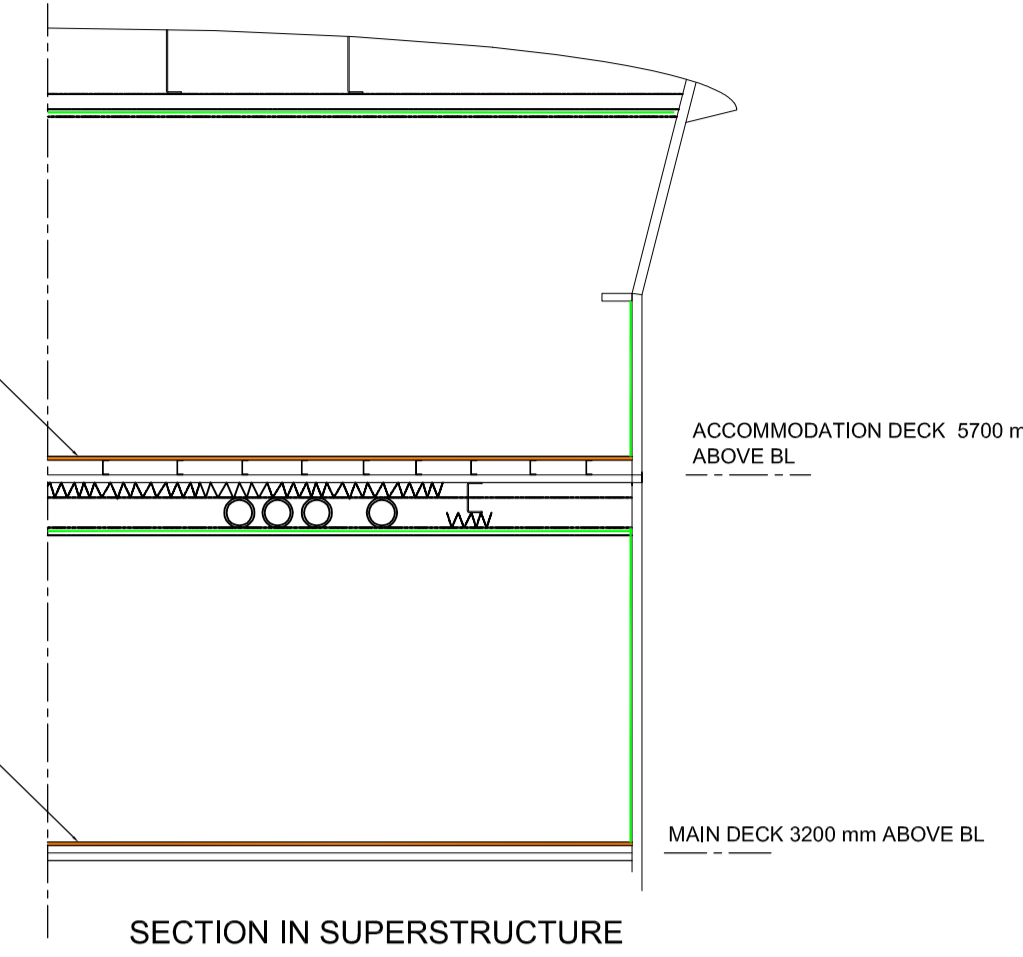
SECTION 3000 mm ABOVE BL



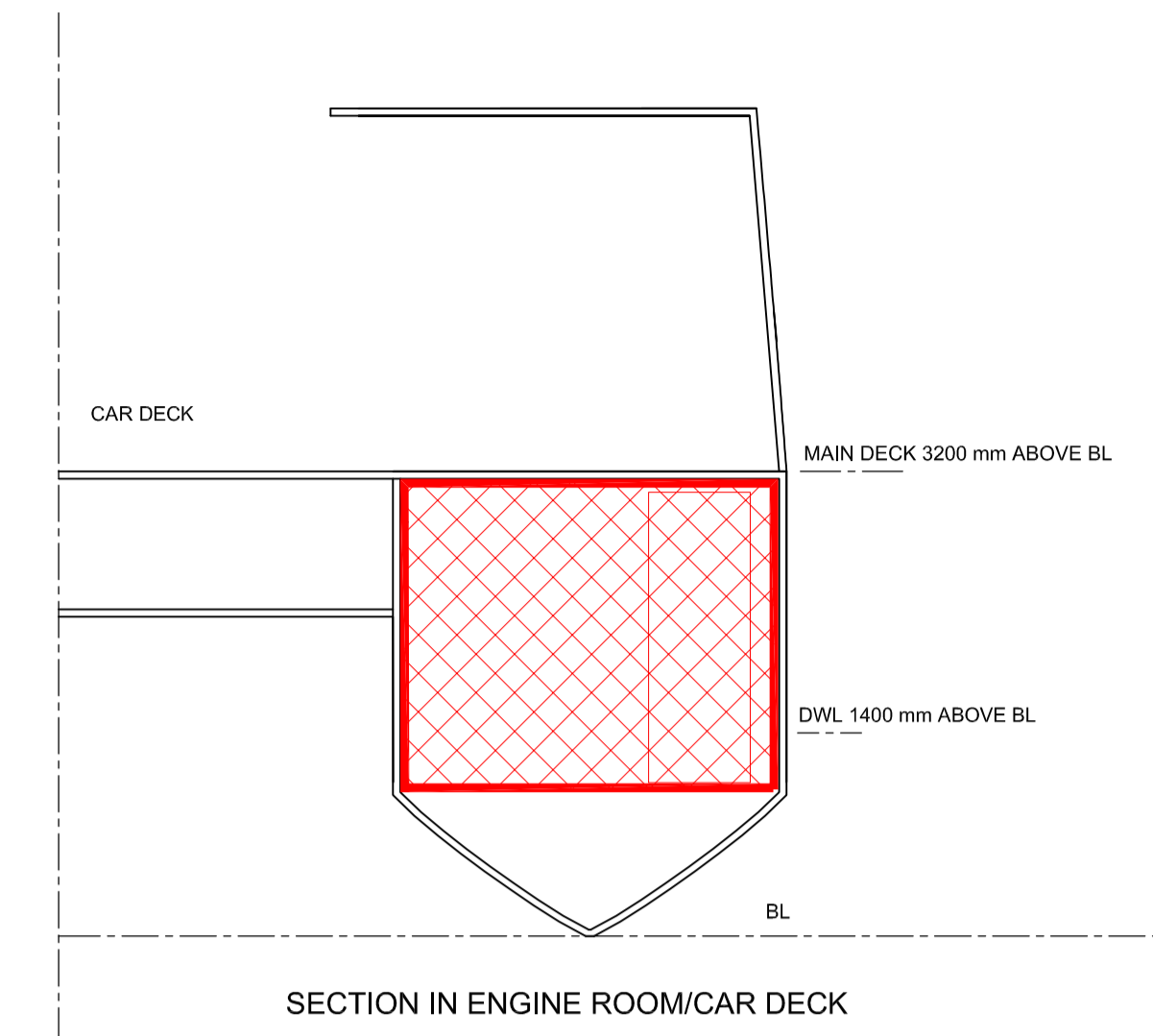
SECTION 2000 mm ABOVE BL

FLOOR:
JELMO SHIP LIGHT PLYWOOD 20 mm
EC TYPE CERTIFICATE NO. 33 223-06 LUX
ON
ALU PROFILES

FLOOR:
JELMO SHIP LIGHT PLYWOOD 20 mm
EC TYPE CERTIFICATE NO. 33 223-06 LUX
ON
ROCKWOOL MARINE SLAB 200.50 mm
CERTIFICATE NO. MED-B-7211



SECTION IN SUPERSTRUCTURE



SECTION IN ENGINE ROOM/CAR DECK

FIRE RISK CLASSIFICATION:
(SOLAS II-2 Reg. 9.2.2.3.2)

1	CONTROL STATIONS
2	STAIRWAYS
3	CORRIDORS
4	EVACUATION STATIONS AND EXTERNAL ESCAPE ROUTES
5	OPEN DECK SPACES
6	ACCOMMODATION SPACES OF MINOR FIRE RISK
7	ACCOMMODATION SPACES OF MODERATE FIRE RISK
8	ACCOMMODATION SPACES OF GREATER FIRE RISK
9	SANITARY AND SIMILAR SPACES
10	TANKS, VOIDS AND AUXILIARY MACHINERY SPACES HAVING LITTLE OR NO FIRE RISK
11	AUXILIARY MACHINERY SPACES, CARGO SPACES, CARGO AND OTHER OIL TANKS, AND OTHER SIMILAR SPACES OF MODERATE FIRE RISK
12	MACHINERY SPACES AND MAIN GALLEYS
13	STORE-ROOMS, WORKSHOPS, PANTRIES, ETC.
14	OTHER SPACES IN WHICH FLAMMABLE LIQUIDS ARE STOWED

FIRE RESISTING DIVISION 60 - LOAD BEARING MSC. 45(65)
EC TYPE CERTIFICATE 100.216 (DECK) AND 100.218 (BULKHEAD)
ISOVER ULTIMATE SYSTEM
COVERED WITH MARITEX 3200-2-SP(SC) TYPE CERTIFICATE MED 02397E

NON COMBUSTABLE MATERIAL
ROCKWOOL 32 RL-ALU 50 mm
CERTIFICATE MED-B-4411

BULKHEADS:
B-15 CLASS LINING
CERTIFICATE MED-B-5519
ALVEDOOR AP2SAL

CEILING:
B15 CLASS CEILING
CERTIFICATE MED-B-5733
DAMPA 208/308
+ 50 mm ROCKWOOL 45 kg/m³

MAIN DIMENSIONS:

LENGTH O.A.	30.7 m
LENGTH p.p.	29.7 m
BREATH mld.	10.0 m
DEPTH	3.2 m
DRAFT DWL	1.4 m
DISPLACEMENT	120 t
MAIN ENIGNE	2 X 110 kW
PASSENGERS	200

UNDER REVISION...

HULL MATERIAL: CARBON REINFORCED EPOXY

CLASSIFICATION : DET NORSKE VERITAS * 1A1, LC, E0

REGISTRATION : EU, NATIONAL TRADE, AREA D

2012-03-10	FIRST REVISION	JOS	NKH	00
DATE	DESCRIPTION	DRAWN	CHECK	IDX
P-REVIEW	SIGN	DATE	DESIGN-REVIEW	SIGN
			SCALE	1:100

DRAWING SIZE: A1

PROJECT: ØKO-Ø FÆRGE

TITLE: STRUCTURAL FIRE PROTECTION

DRAWING NUMBER: 050-091-0101-002-000

050-091-0101-002-000

050-091-0101-002-000